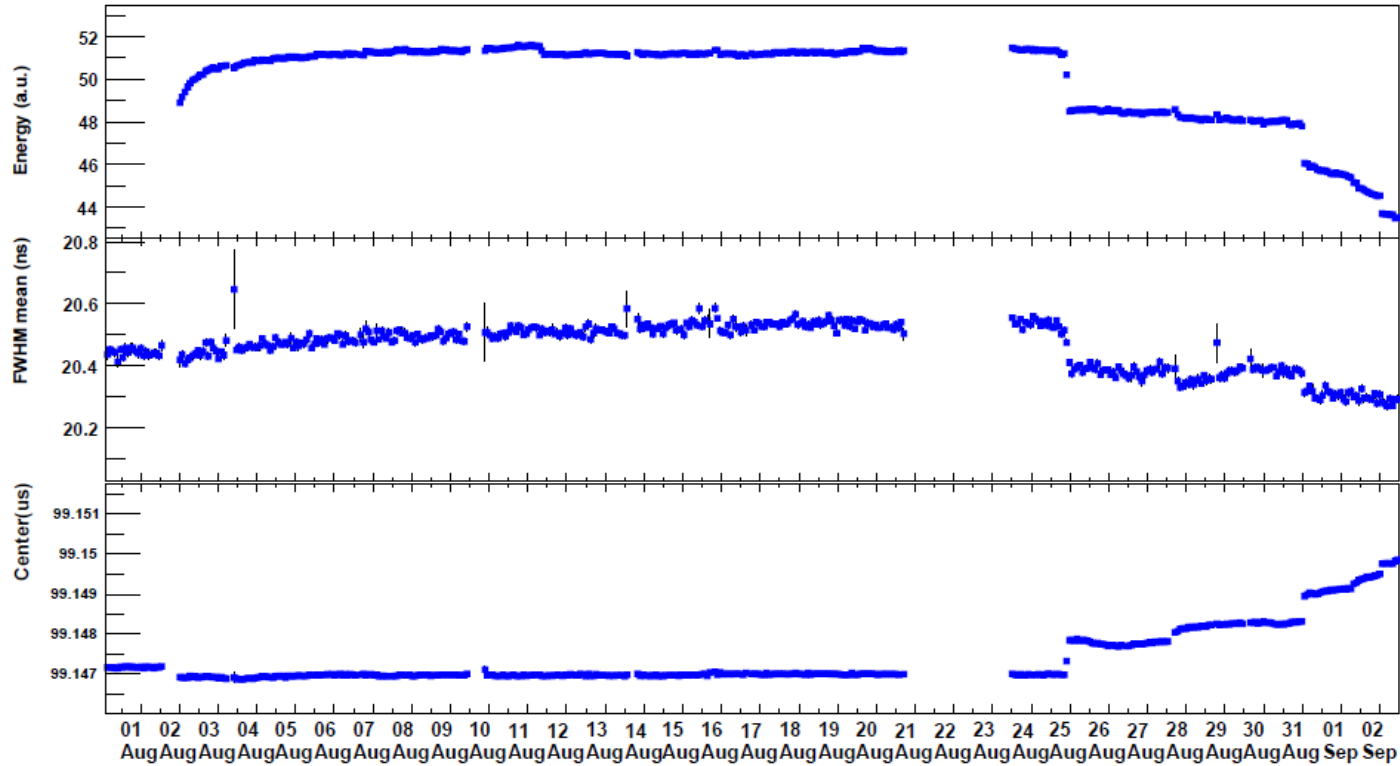
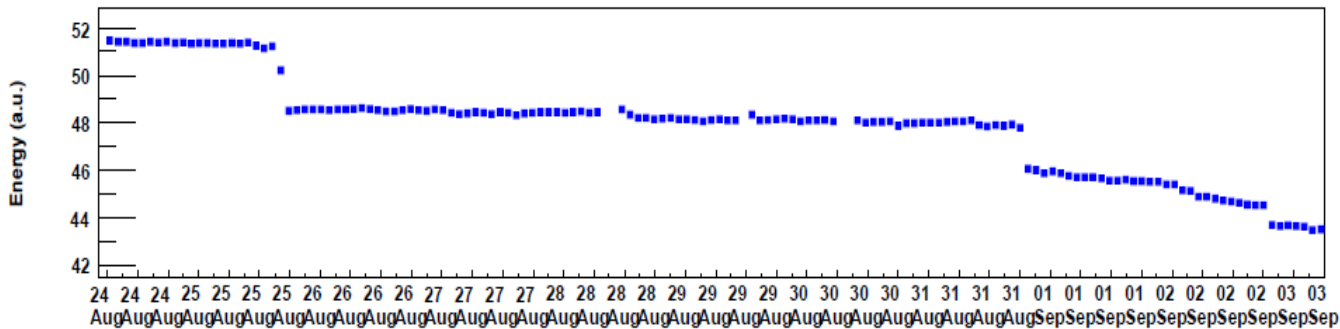


Power measurement 3 Sept



B=0T : 11-14 + 21-22 August
 Shielding: 24 August
 Chiller out: 28 August ,11am
 to 3pm

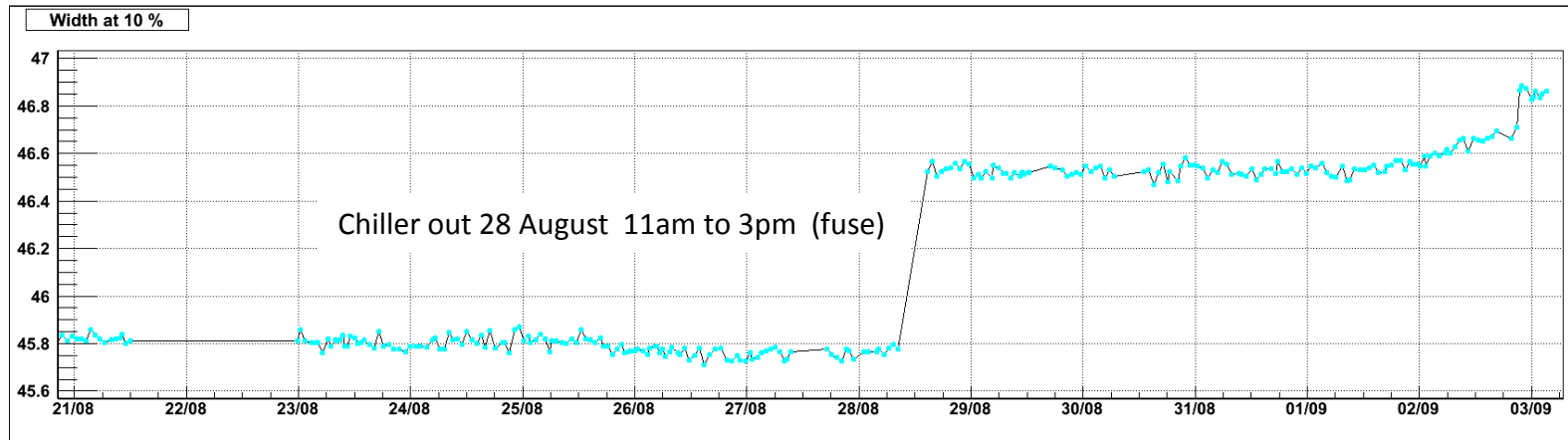
DP2.447 Slow Monitoring 2012



**3 steps for amplitude,
 unknown raison:**

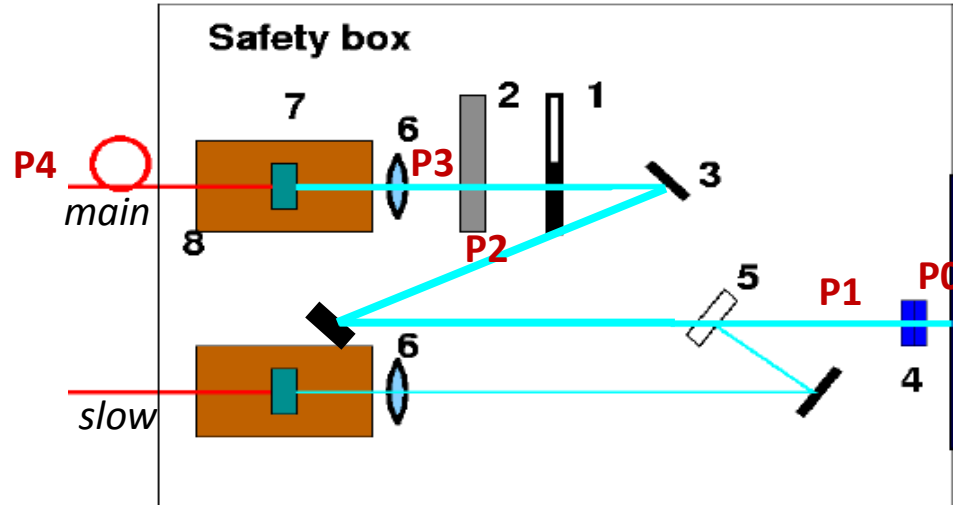
- Aug 25 at 7:30 PM
- Aug 31 at 9:00 PM
- Sep 02 at 10:00 PM

Power measurement 3 Sept



→ Intervention correlated to the visible step only for width 10%

Power measurement 3 Sept



Power (mW)/Date	28 June (TS Liyuan)	11 July (move mirror + cleaning)	2 August (after moving filter 4)	3 Sept.
P0) Before filter:			102	-14% → 88
P1) DP2-447 output:	93	89.3	93	80
P2) Before fold mirror 3:	83	80	84	70
P3) After attenuator:	77	70.5 (-1 dB)	68 (-1.36 dB)	65 (-1.3 dB)
P4) Coupling 1m fibre:	65 (-1.44 dB)	62.5 (-1.55 dB)		56.7 (-1.9 dB)

Power measurement 3 Sept

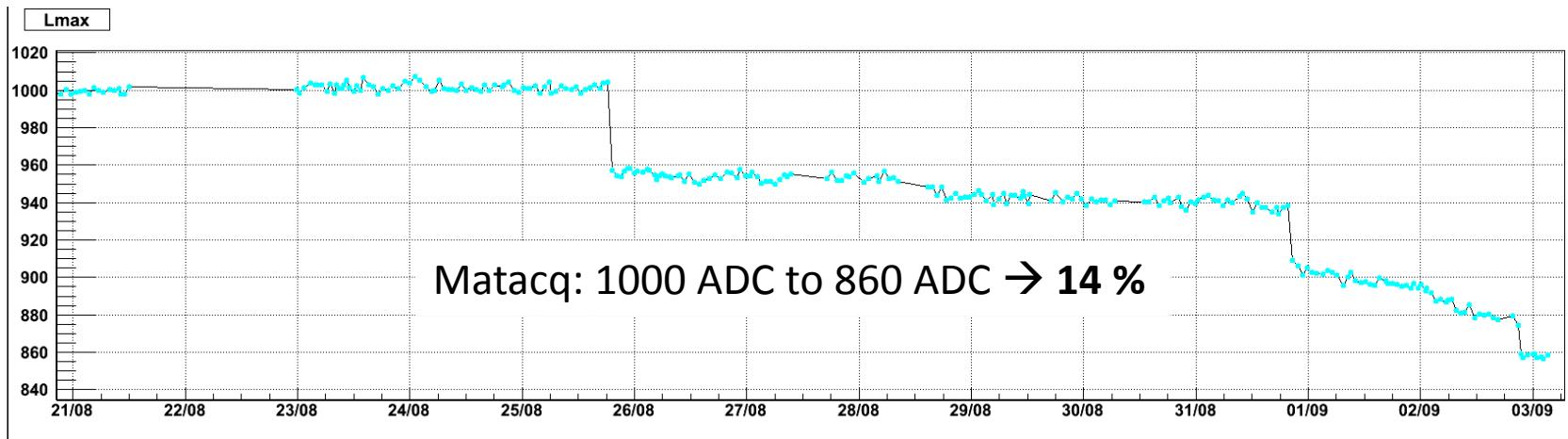
Intervention :

- Laser power : $\sim -14\%$ compared to 2 August ! Unknown raison.
- Increasing – decreasing diode current in order to perform power measurement; Power cycle laser to clean the filter. No effect on laser power;
- Moving and cleaning a bit the filter 4 to be sure it is OK: no effect;
- Removing the main fibre to check the coupling. Cleaned it. Not perfect, could be improved next TS, but this is not the problem now.

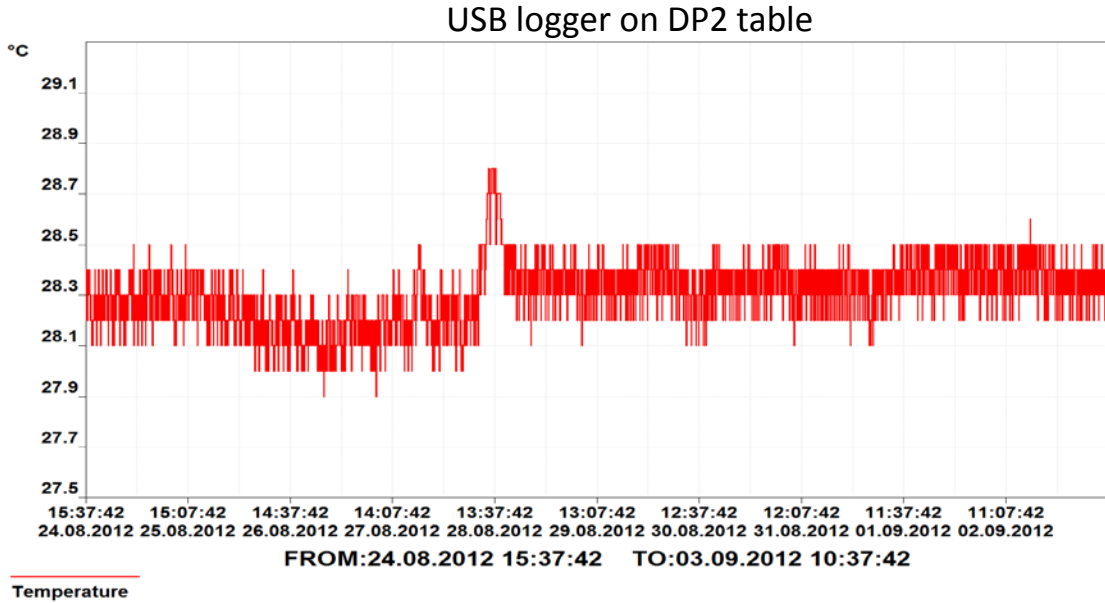
Action:

Removing the shielding because of no effect of B field.

Room and laser temperature are stable. No correlation.



Power measurement 3 Sept



- 3 steps for DP2 amplitude:
- Aug 25 at 7:30 PM
 - Aug 31 at 9:00 PM
 - Sep 02 at 10:00 PM

