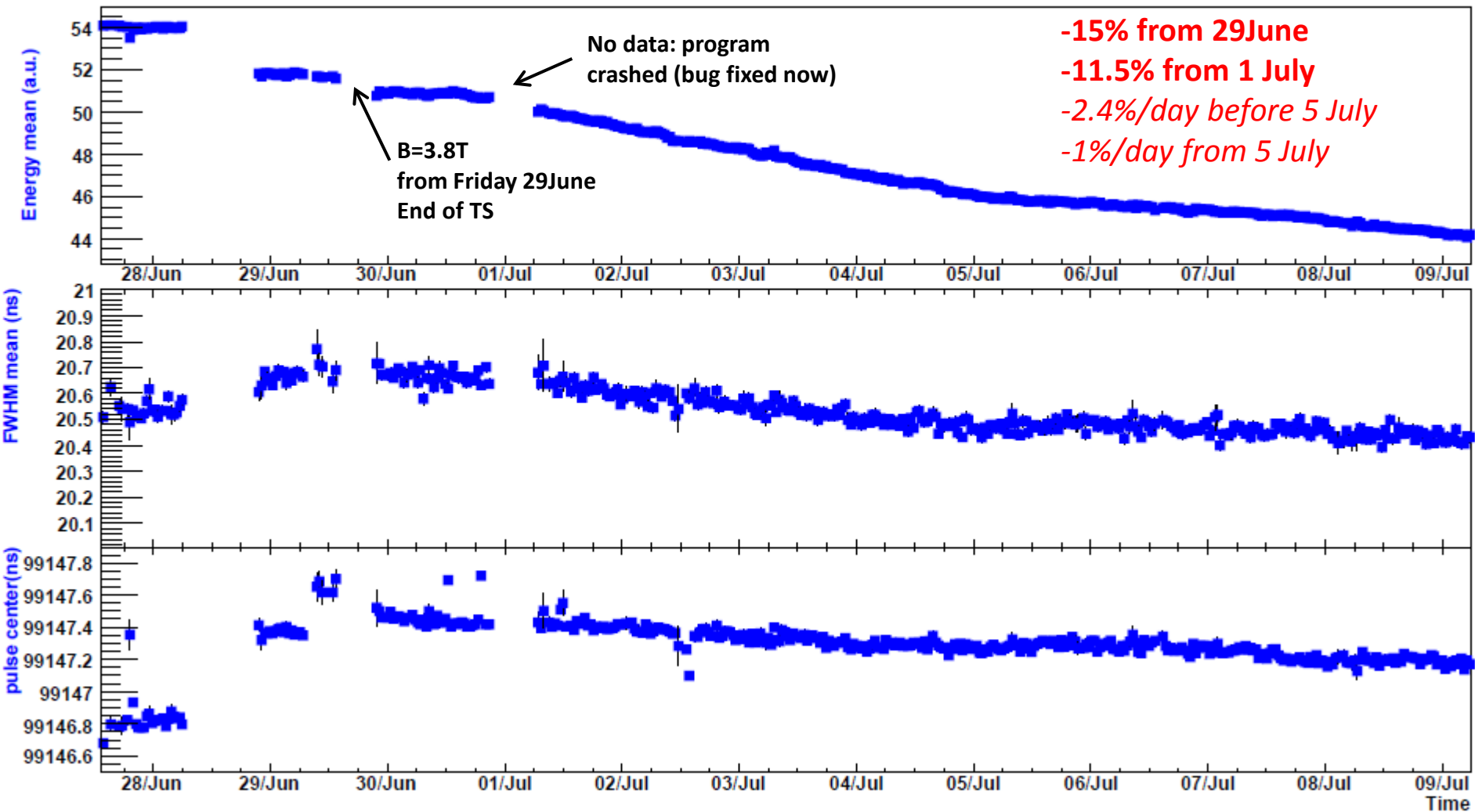
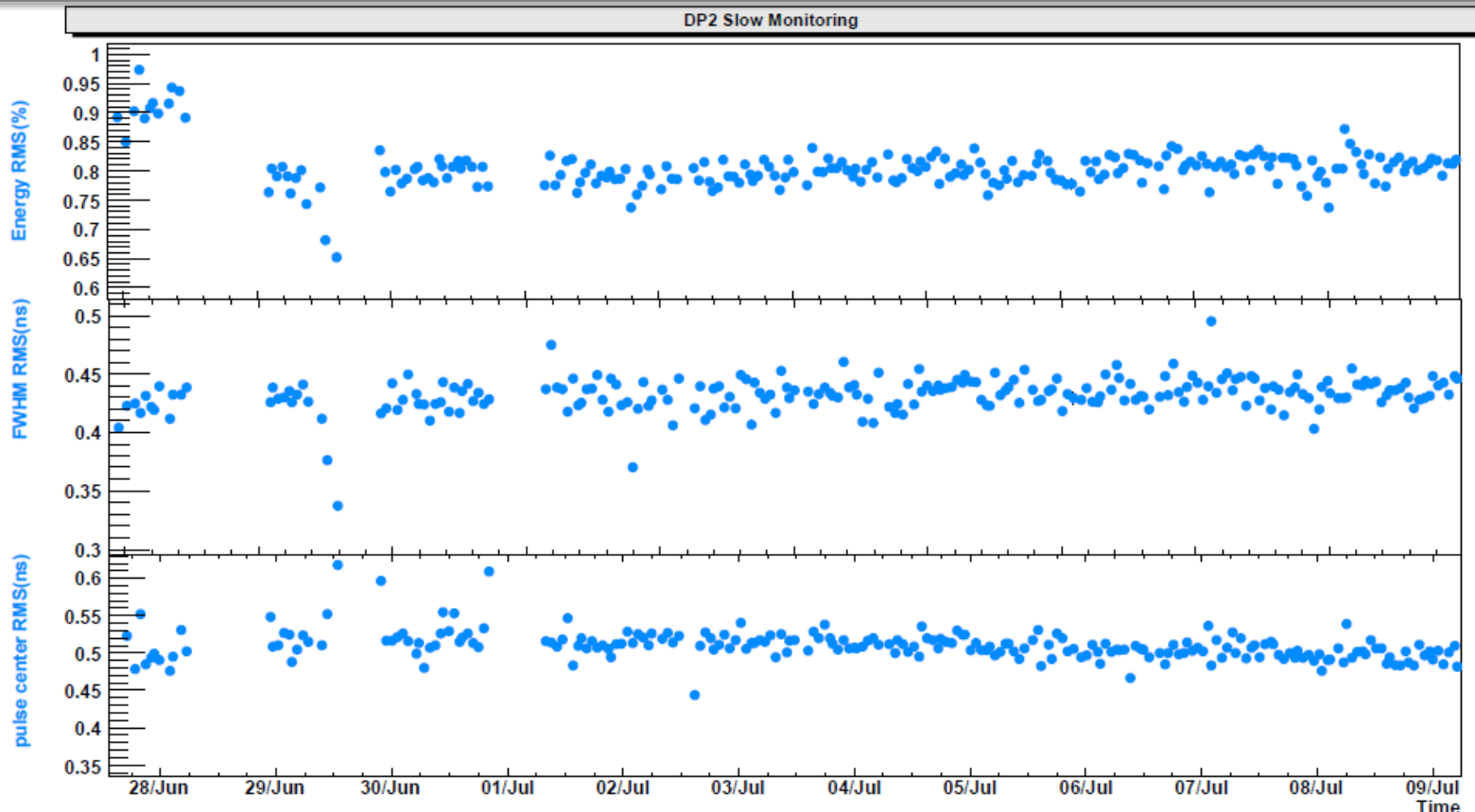


Lasers - OM meeting 11 July

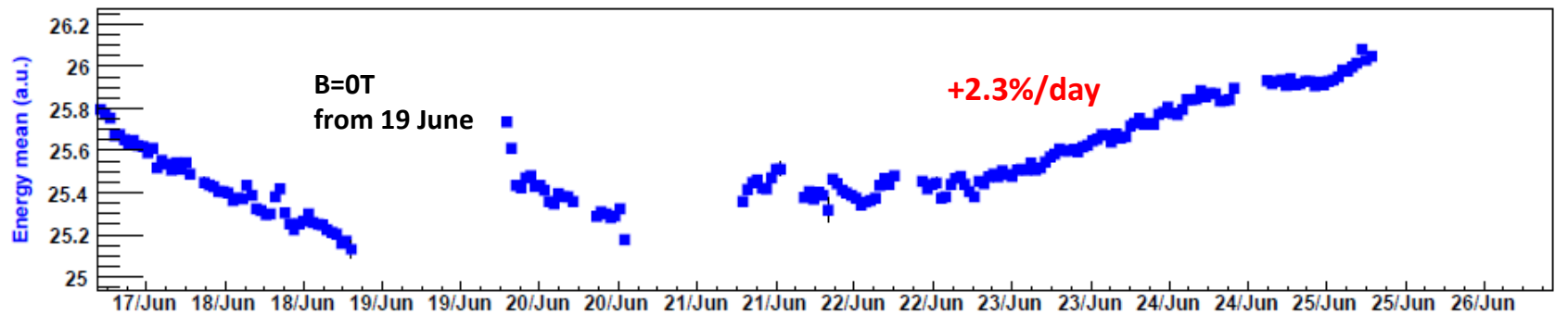
DP2 Slow Monitoring



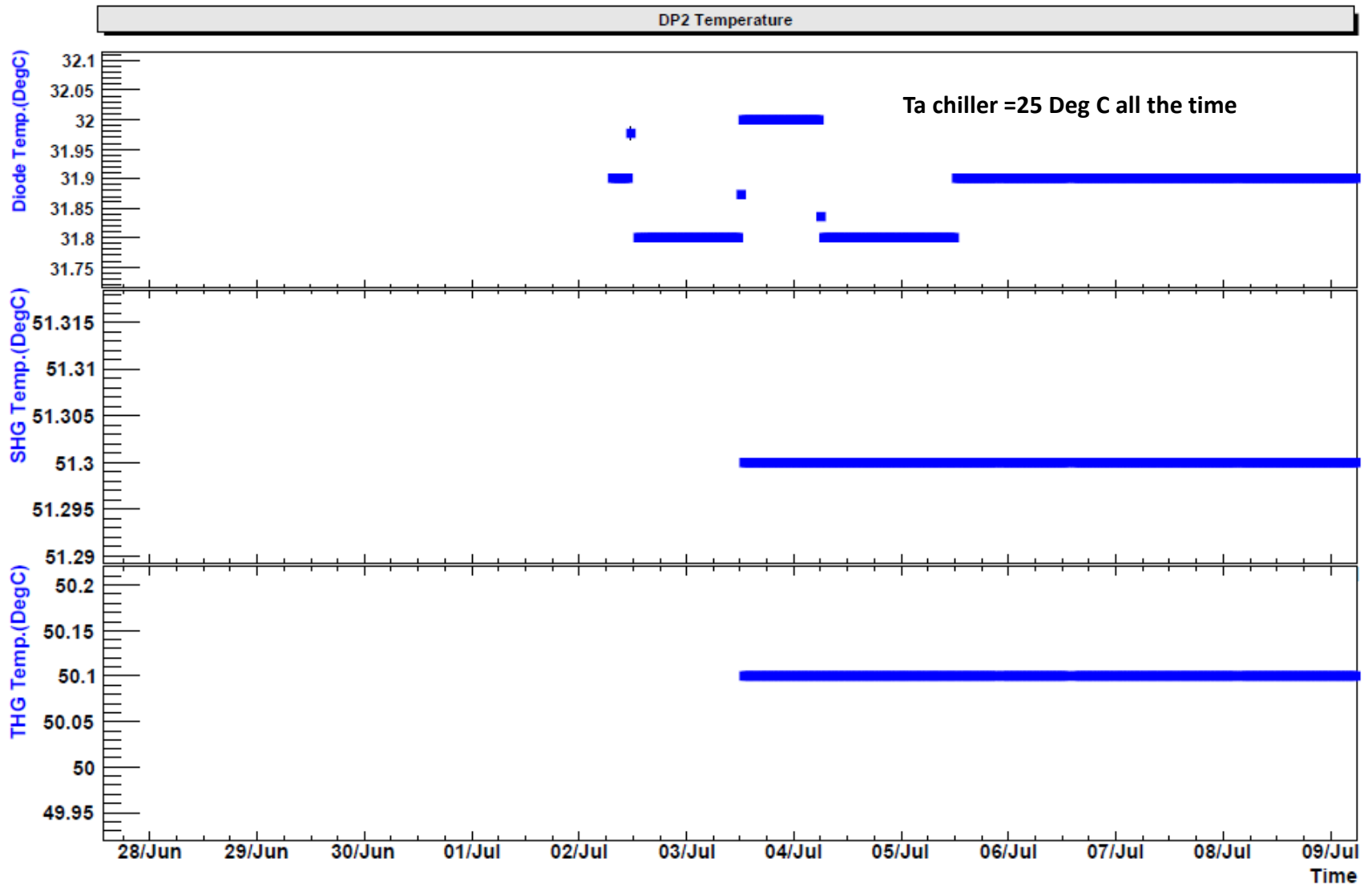
Lasers - OM meeting 11 July

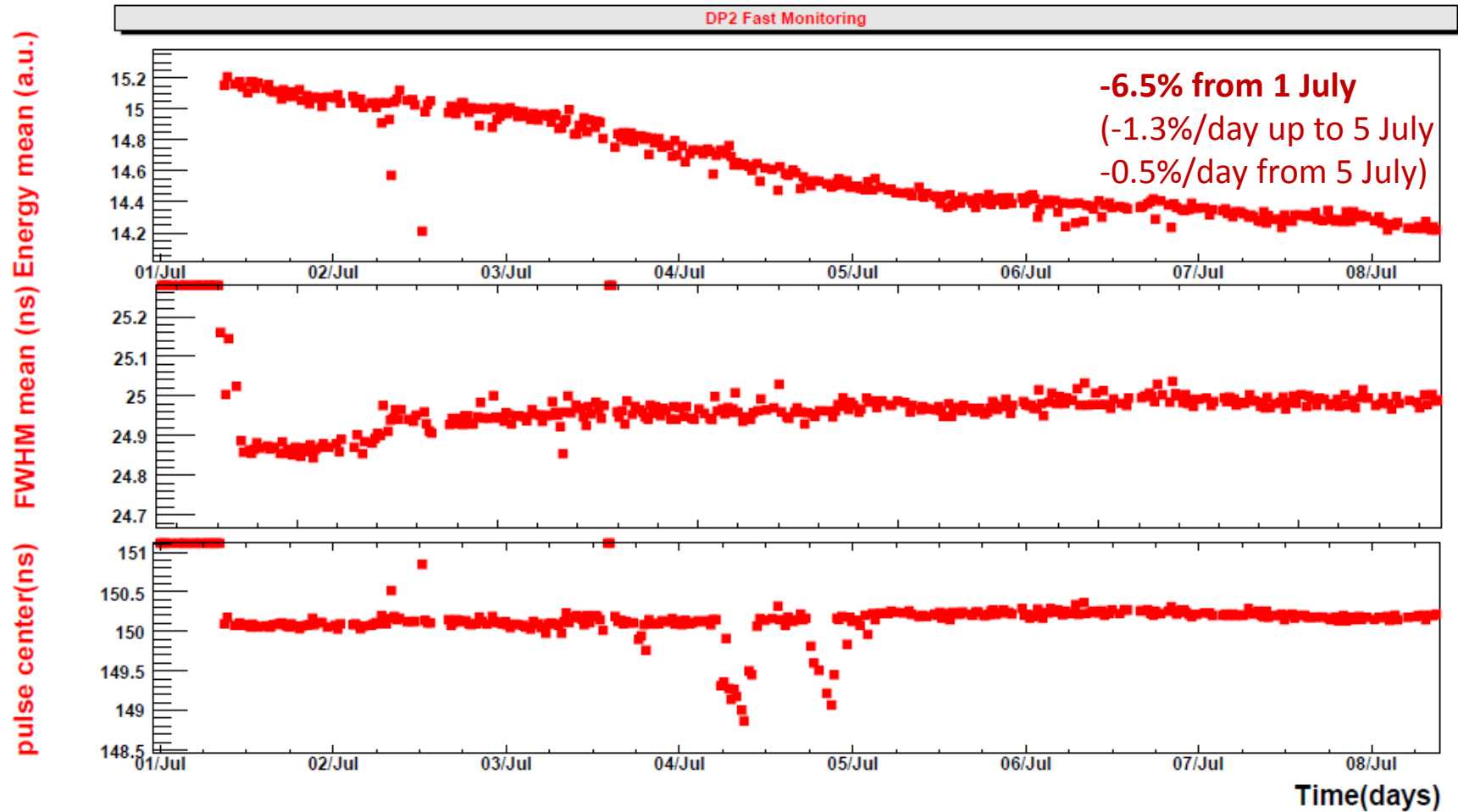


Slow data end of June when B field ramp down to 0T:

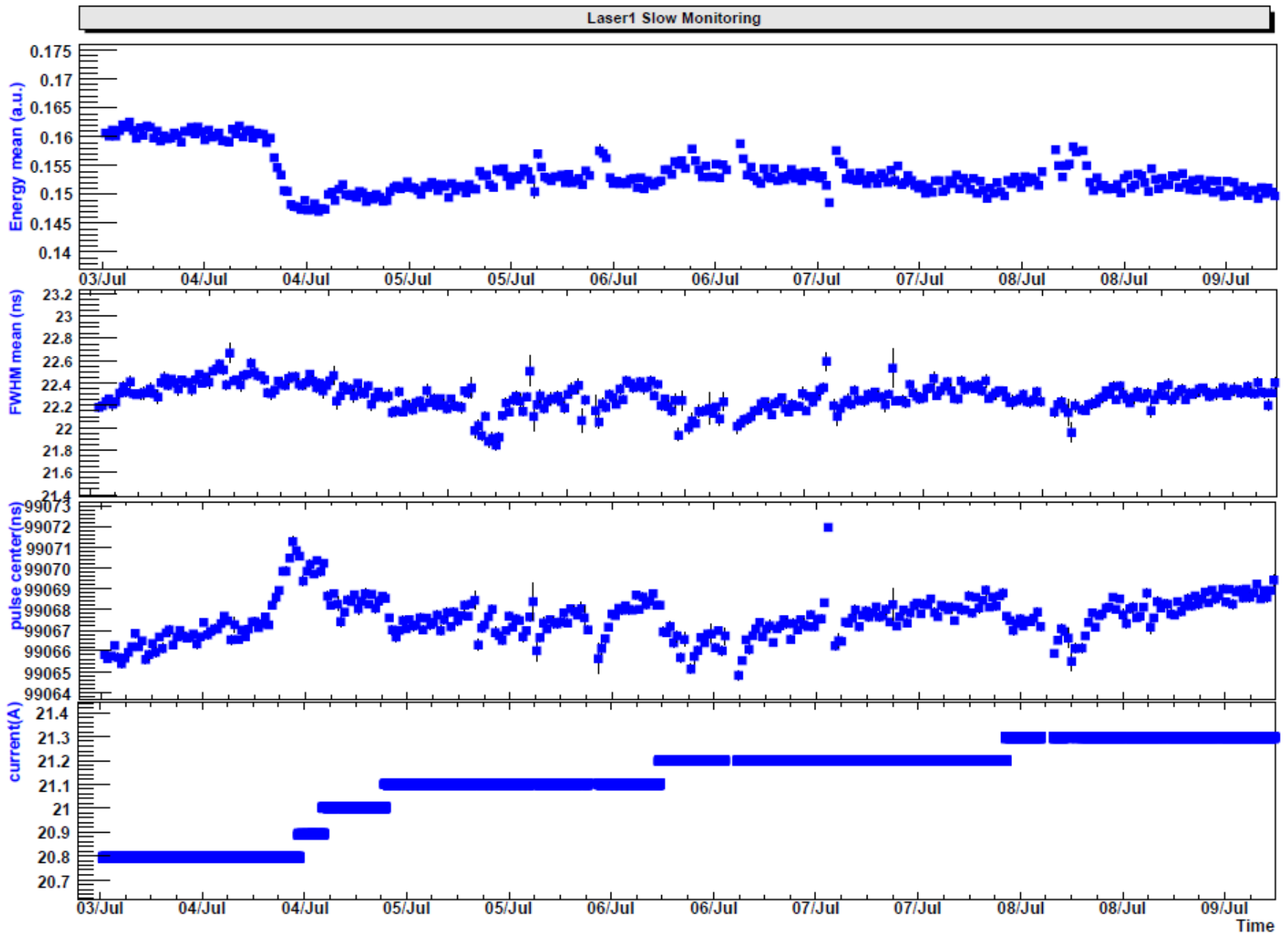


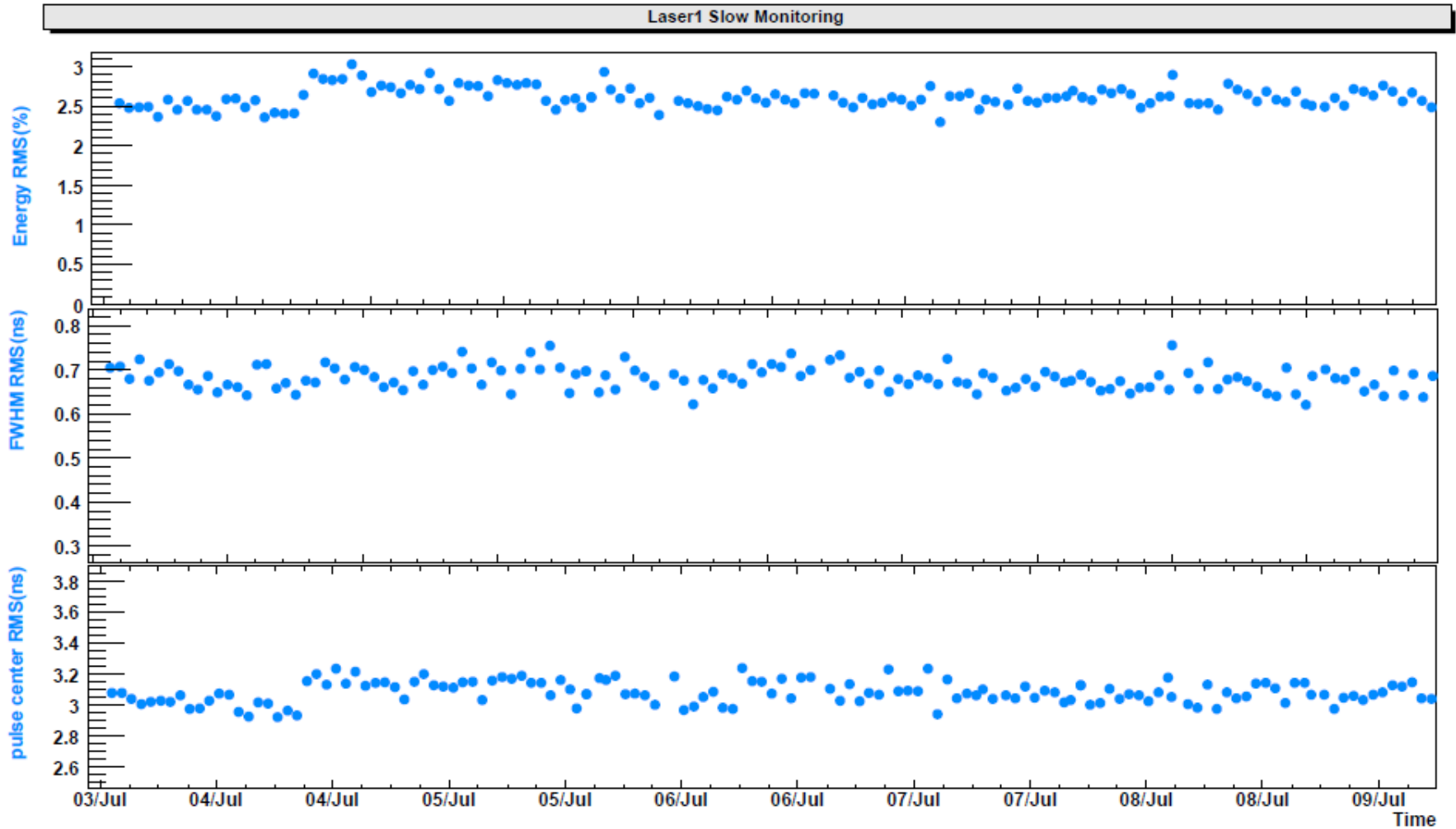
Lasers - OM meeting 11 July





Lasers - OM meeting 11 July





Conclusion:

- ✓ Intensity slow monitoring: : -1%/day since 5 July, same rate as from 23 May to 11 June (period without intervention)
- ✓ B field seems to have a long term effect on DP2 pulse intensity.
-> propose to shield the laser itself and then maybe the chiller.
- ✓ Slow monitoring : larger degradation . Could be the fibre now. Free time to do a power measurement (~15 min) will be nice.
 - Laser power B=3.8T @ 55A: 87, 87.5, 89 mW in March, April, 11 June.
 - Laser power with B= 0T @ 55A: 93 mW 25 June